

Aldreds
Estate Agents

14 Priory Gardens
, Great Yarmouth, NR30 1NH
Asking Price £150,000



14 Priory Gardens

, Great Yarmouth, NR30 1NH

Aldreds are pleased to offer this attractively presented, modernised mid terraced house in a convenient location yards from the market place and town centre. The property offers a flexible layout of accommodation comprising of an entrance hall, living room, dining room/bedroom 3, revamped kitchen/breakfast room, first floor landing serving two separate bedrooms and a large bathroom. Outside there is a forecourt and enclosed rear courtyard with an outside wc. The property also benefits from gas central heating with a new boiler installed, double glazed windows and is offered with no onward chain.

Entrance Hall

Part double glazed pvc entrance door, stairs to first floor, doors leading off to:

Dining Room/Bedroom 3

10'10" x 9'9" (3.30 x 2.97 (3.31 x 2.98))

Plus double glazed bay window to front aspect and including the chimney breast, radiator, picture rail, coved ceiling.

Living Room

13'2" x 10'11" (4.01 x 3.33)

Including the chimney breast plus under stairs cupboard, double glazed window to rear aspect, radiator, tv aerial lead, door to:

Kitchen/Breakfast Room

16'1" x 8'0" (4.90 x 2.44)

Including chimney breast divider, revamped kitchen with fitted medium oak fronted wall and matching base units with polished finish work surfaces over, built in electric oven and four ring ceramic hob, single drainer cast sink, two double glazed windows to side aspect, cupboard housing the new gas boiler, part double glazed pvc rear entrance door.

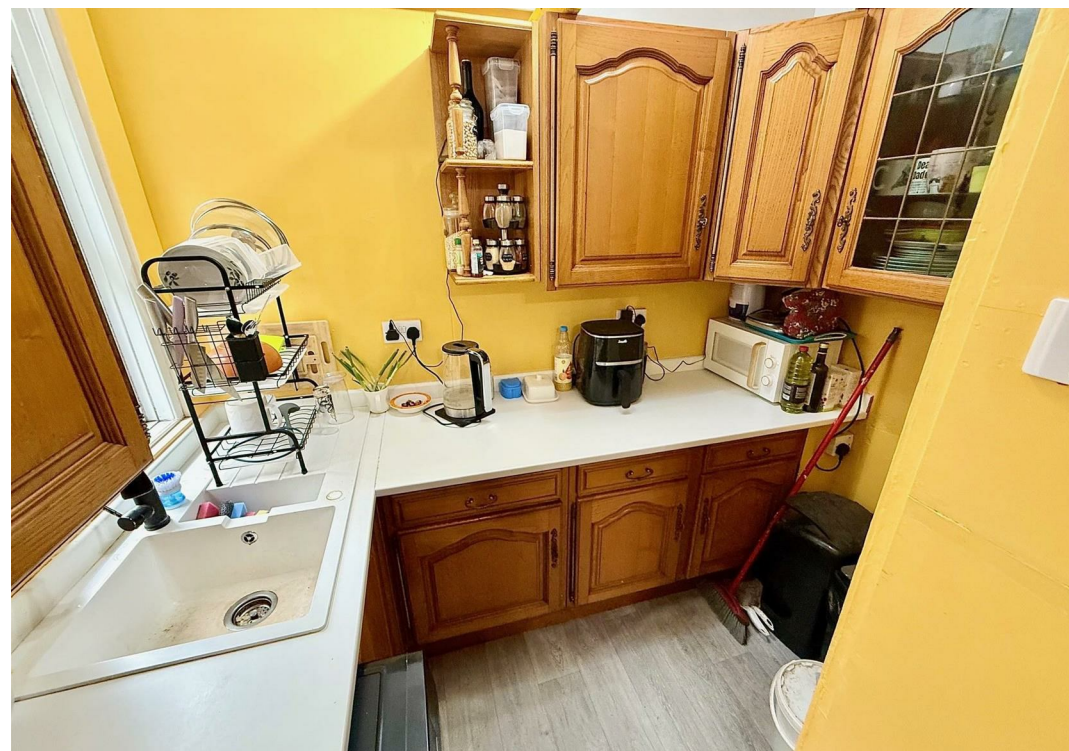
First Floor Landing

Access to the loft space, doors leading off to:

Bedroom 1

13'2" x 10'9" (4.01 x 3.28)

Including the chimney breast plus wardrobe cupboard, double glazed window to front aspect, radiator.





Bedroom 2

10'11" x 10'2" (3.33 x 3.10)

Including the chimney breast with cast iron fireplace plus wardrobe cupboard, radiator, double glazed window to rear aspect.

Bathroom

10'4" x 8'0" (3.15 x 2.44)

White suite comprising panel bath with electric shower fitting over, pedestal wash basin, low level wc, airing cupboard housing the hot water cylinder, frosted double glazed window to side aspect, radiator.

Outside

To the front of the property is a small forecourt. To the rear is an enclosed courtyard with an outside wc and gate leading to a rear service passageway.

Tenure

Freehold

Services

Mains water, electric, gas and drainage.

Council Tax

Great Yarmouth Borough Council - Band 'A'

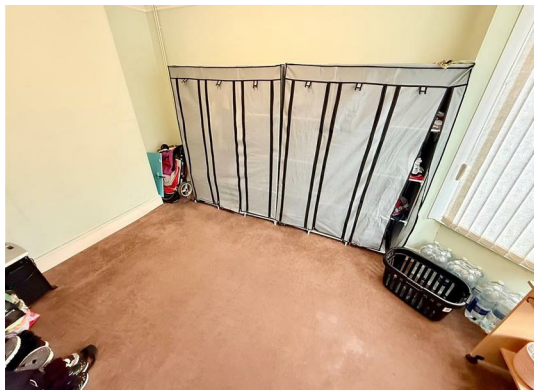
Location

Great Yarmouth is the largest resort on the East Norfolk coast with its Historic Market Place and varied selection of shops. The town has a busy port and the rivers Yare and Bure give access to the Norfolk Broads. There are Museums * Race Course * Greyhound Stadium * Schools for all ages * District Hospital approximately 5 miles south. Bus and rail services connect with Norwich.

Directions

From the Yarmouth office head north along North Quay, at the roundabout turn right into Fullers Hill, continue over the traffics, just before Sainsbury's turn left into Priory Gardens where the property can be found on the left hand side.

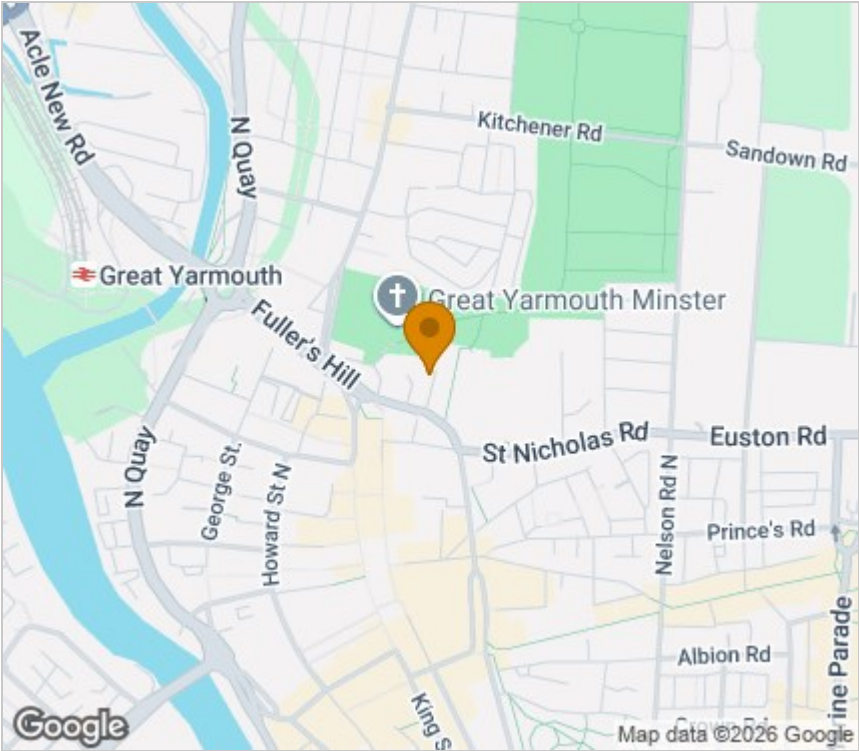
Y12614



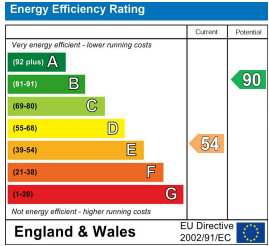
Floor Plan



Area Map



Energy Efficiency Graph



Viewing

Please contact our Aldreds Great Yarmouth Office on 01493 844891 if you wish to arrange a viewing appointment for this property or require further information.

Disclaimer
These particulars are issued on an understanding that all negotiations shall be conducted through Messrs. Aldreds. Please note: Messrs. Aldreds for themselves and for the vendors or lessors of this property whose agents they are given notice that: 1. Particulars are set out as a general outline only for guidance of intending purchasers or lessees, and do not constitute nor constitute part of, an offer or contract. 2. All descriptions, dimensions, references to condition and necessary permissions for use and occupation, and other details are given without responsibility and any intending purchasers or tenants should not rely on them as statements or representations of fact but must satisfy themselves by inspection or otherwise as to the correctness of each of them. 3. No person in the employment of Messrs. Aldreds has any authority to make or give any representation or warranty whatever in relation to this property. 4. If you are proposing to visit the property and are travelling some distance please check with Aldreds on the issue of availability prior to travelling. 5. Aldreds Property Consultants and associated services may offer additional services to the prospective purchaser for which they will be entitled to receive a commission. Aldreds are pleased to be working with Mortgage Advice Bureau. They're an award-winning mortgage broker with over 1,400 advisers across the UK, and have access to over 12,000 mortgage products from over 90 lenders. Aldreds Estate Agents Ltd receive a commission of £200 on each completed case. Your home may be repossessed if you do not keep up repayments on your mortgage. There may be a fee for mortgage advice. The actual amount you pay will depend upon your circumstances. The fee is up to 1%, but a typical fee is 0.3% of the amount borrowed. Mortgage Advice Bureau is a trading name of Mortgage Seeker Limited which is an appointed representative of Mortgage Advice Bureau Limited and Mortgage Advice Bureau (Derby) Limited which are authorised and regulated by the Financial Conduct Authority. Mortgage Seeker Limited Registered Office: Lovewell Blake, Sixty Six North Quay, Great Yarmouth, Norfolk, NR30 1HE. Registered in England Number: 03721415. 6. Potential purchasers should check with their providers that the broadband and mobile phone coverage they would require is available.

17 Hall Quay, Great Yarmouth, Norfolk, NR30 1HJ
Tel: 01493 844891 Email: yarmouth@aldreds.co.uk <https://www.aldreds.co.uk/>
Registered in England Reg. No. 08945751 Registered Office: 17 Hall Quay, Great Yarmouth, Norfolk NR30 1HJ
Directors: Mark Duffield B.S.c. FRICS. Dan Crawley MNAEA Paul Lambert MNAEA